

# Lab 4: Adding Controls to a Web Page

## Lab Overview

### Objectives

After completing this lab, you will be able to:

- ♦ Add standard HTML controls to a Web page.
- ♦ Set properties of HTML controls.
- ♦ Add ActiveX controls to a Web page.
- ♦ Set properties of ActiveX controls.

### Scenario

Adding controls to a Web page is the first step toward making the page active. There are two types of controls you can use: standard HTML controls and ActiveX controls. In this lab, you will add both types of controls to the Customer Data page and the Product List page of the Main Street Market Web site.

### Lab Setup

In this lab, you will edit the Customer Data page, CustData.htm. You can edit the file copied to the root of the Main Street Market Web site in earlier labs, or copy the file from the \Labs\Lab04 directory and edit it.

You will also add information to the Product List Web page, Products.htm. You can continue to edit the page you were working on in Lab 3.2, or use the page provided in the \Labs\Lab04 directory.

If you need help with this lab, the solution files are in the \Labs\Lab04\Solution directory.

This demonstration shows the solution to this lab.



Estimated time to complete this lab: **60 minutes**.

## Exercises

The following exercises provide practice working with the concepts and techniques covered in this chapter.

### Exercise 1: Creating the Customer Data Page

In this exercise, you will create a Web page to gather customer information from users.

### Exercise 2: Adding Controls to the Product List Table

In this exercise, you will add a column to the Product List table and insert text boxes and ActiveX spin buttons to retrieve quantity information from users.

## Exercise 1: Creating the Customer Data Page

One reason a company would create a Web site is to collect information about their customers: who they are, where they live, and any comments they may have.

In this exercise, you will create a Web page to collect this type of information from the Main Street Market customers. In Chapter 7, you will learn how to send this information to an Internet server and save it in an ODBC database.

➤ **Add HTML controls to the Customer Data Web page**

Your finished page will look similar to the following:

Please fill in information about yourself and your company.  
We will assign you a number that you can use in future communications with us.

Name	<input type="text"/>	Title	<input type="text"/>
Company	<input type="text"/>	Email	<input type="text"/>
Street	<input type="text"/>		
City	<input type="text"/>	State	<input type="text"/>
		Zip	<input type="text"/>
Country	<input type="text" value="USA"/>		

Would you like to be on our mailing list?  Yes  No  
Would you like a catalog?  Yes  No

Do you have any suggestions for us?

1. Open the Customer Data Web page, CustData.htm, with Internet Assistant for Word.
2. Using the Form Field command on the Insert menu, or the Forms toolbar, insert single-line text boxes for the customer's name, title, company, e-mail address, street address, city, state, and zip code.
  - a. Set the NAME parameters to: Name, Title, Company, Email, Street, City, State, and Zip
  - b. Place the controls in a table to align them.

---

**Note** When you add controls with Internet Assistant for Word, it first creates a form, and then places the controls into the form. You'll learn about forms in Chapter 6. For now, leave the form in the file, and insert all controls into it.

---

3. Insert a selection control for the country.
  - a. Fill the list with: Brazil, France, Germany, Spain, Switzerland, and USA.
  - b. Set the NAME parameter to Country.
  - c. Make USA the default selection.

---

**Note** These are just some of the countries where the customers may live. The list has been shortened for instructional purposes.

---

4. Insert a radio button group to ask customers if they want to join the Main Street Market mailing list.
  - a. Set the NAME of the radio group to MailingList.
  - b. Create Yes and No buttons in the group.
5. Insert a radio button group to ask if customers want to receive a catalog.
  - a. Set the NAME of the radio group to Catalog.
  - b. Create Yes and No buttons in the group.

6. Insert a multiple-line text box for customers to enter suggestions.
7. Insert a Reset button.
8. Save your changes to the Customer Data page.

➤ **Add masked edit controls to the Customer Data page**

Now you will add ActiveX controls to the Customer Data page. This is best accomplished with an ASCII text editor, such as Notepad.

1. Open the Customer Data page with Notepad.
2. Add a row to the table for Phone and Fax information.
3. Retrieve the class ID for the Microsoft Masked Edit control.
  - a. Open the OLE Viewer or the ActiveX Control Insertion Device, or run RegEdit to open the Windows registry.  
 For Installation and Setup Instructions for the OLE Viewer and the ActiveX Control Insertion Device, see Development Tools.
  - b. Search for Microsoft Masked Edit Control.  
 This control is installed with Visual Basic. If it isn't installed on your computer, the class ID is: C932BA85-4374-101B-A56C-00AA003668DC.
  - c. Either copy the <OBJECT> tag to the Clipboard, or write down the class ID.
4. Add two <OBJECT> tags to the Customer Data page for the Phone and Fax masked edit controls. For each <OBJECT> tag:
  - a. Set the CLASSID parameter to the class ID of the masked edit control.
  - b. Set the ID parameter to Phone or Fax, respectively.
  - c. Set the width to 120 and the height to 25.
5. For each <OBJECT> tag, set the CODEBASE parameter:
  - a. In Lab 2.2 you created a Controls directory in the root of the Main Street Market Web site, and copied controls into it. If you did not create it, create the directory now, and copy the masked edit control, MSMask32.ocx, from the \Labs\Lab04 directory to the Controls directory.
  - b. Set the CODEBASE parameter of the <OBJECT> tag to point to this file.

If you are unsure of the syntax for the <OBJECT> tag, look at this solution code:

```
<OBJECT
  ID="Fax"
  CLASSID="clsid:C932BA85-4374-101B-A56C-00AA003668DC"
  CODEBASE="/Controls/msmask32.ocx"
  WIDTH=120
  HEIGHT=25>
</object>
```

6. Initialize the following properties with PARAM tags.

Property	Value
Appearance	1
BorderStyle	1
Mask	(###) ###-####

---

**Note** In Lab 5, you will change the Mask, based on which country is selected.

---

The two masked edit controls should look like the following:



The screenshot shows a web form with three controls. The first is a dropdown menu labeled 'Country' with 'USA' selected. The second is a text box labeled 'Phone' with a mask '( ) -'. The third is a text box labeled 'Fax' with a mask '( ) -'.

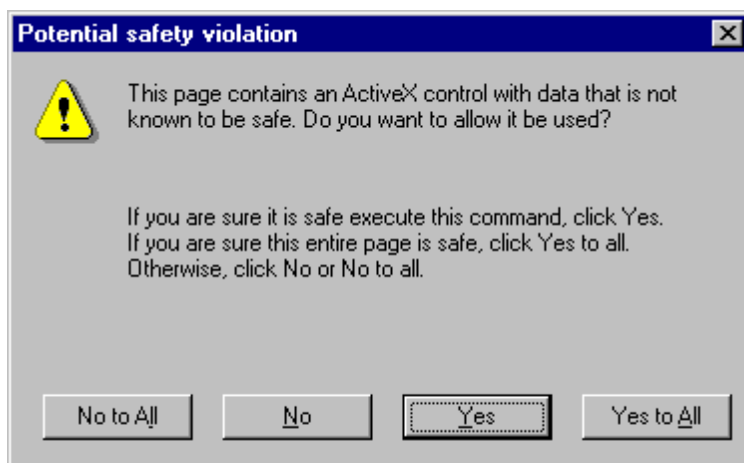
7. Save your changes to the Customer Data page.

➤ **Test the Customer Data page.**

- ◆ Open the Customer Data page with the Internet Explorer.

---

**Note** When you open a Web page containing ActiveX controls that are not signed, you'll receive this error message:



When you are developing and testing a new Web page with ActiveX controls, you can turn off this security checking in the Internet Explorer.

---

1. Choose Options from the View menu.
2. Select the Security tab.
3. Select Safety Level in the Active Content section.
4. Set the Active Content Security setting to None.

Be sure to reset the Active Content Security before you visit external sites.

---

## Exercise 2: Adding Controls to the Product List Table

The Products page of the Main Street Market Web site lists the most popular products for sale. In this exercise, you will add a column of text boxes and ActiveX spin buttons to the table that will allow customers to indicate the quantities of the items they want to purchase. You will also add Subtotal, Tax, and Total text boxes to the table to display a running total of the cost of all items selected. (In Lab 5, you'll write the VBScript code to fill in these values.)

In this exercise, you should manually add the HTML tags for the controls to the table by using Notepad. (Internet Assistant will add tags to the table that you may not need when editing this table in later labs.)

➤ **Add Quantity controls to the Products table**

1. Open the Products page, Products.htm, with Notepad.
2. Add another column to the Products table named Quantity.

3. Add an HTML text box to each row in the Quantity column.
  - a. Set the NAME properties for each text box to Quantity1, Quantity2, and so on, respectively.
  - b. Set the MAXLENGTH property to 5.
  - c. Set the SIZE to 2.
  - d. Set the VALUE to 0.

If you are unsure of the HTML tags for a row of the table, look at this solution code:

```
<TR>
<TD><FONT SIZE=2>60</FONT></TD>
<TD><FONT SIZE=2>Camembert Pierrot</FONT></TD>
<TD><FONT SIZE=2>Dairy Products</FONT></TD>
<TD BGCOLOR="#008080"><FONT SIZE=2>$34.00</FONT></TD>
<TD><INPUT NAME="Quantity1" VALUE="0" MAXLENGTH="5" SIZE=2></TD>
</TR>
```

Each row in your finished table should look like this:

Number	Product Name	Category	Price	Quantity
60	Camembert Pierrot	Dairy Products	\$34.00	<input type="text" value="0"/>
58	Escargots de Bourgogne	Seafood	\$13.25	<input type="text" value="0"/>

➤ **Add Subtotal, Tax, and Total text boxes**

1. Add three more rows to the Products table for Subtotal, Tax, and Total.
  - Use the background color of the Price column, #008080, and a text color of white.
  - Align the text with the Price column by right-aligning the text, and setting COLSPAN to 3.
2. Add a text box to each new row in the same column as the Quantity boxes:
  - a. Set the NAME property of each text box to Subtotal, Tax, and Total, respectively.
  - b. Set the MAXLENGTH to 7.
  - c. Set the SIZE to 7.
  - d. Set the VALUE to 0.
3. Add a button to calculate the total next to the Total text box:
  - a. Set the NAME to CalcTotal.
  - b. Set the VALUE to Calculate.

If you are unsure of the HTML tags for a row of the table, look at the solution code:

```
<TR>
<TD BGCOLOR="#008080" align="right" COLSPAN=3>
<FONT COLOR=#FFFFFF>Subtotal </FONT></TD>
<TD ALIGN="right">
<INPUT NAME="Subtotal" VALUE="0" MAXLENGTH="7" SIZE=7></TD>
</TR>

<TR>
<TD BGCOLOR="#008080" align="right" COLSPAN=3>
<FONT COLOR=#FFFFFF>Tax </FONT></TD>
<TD ALIGN="right">
<INPUT NAME="Tax" VALUE="0" MAXLENGTH="5" SIZE=5></TD>
</TR>

<TR>
<TD BGCOLOR="#008080" align="right" COLSPAN=3>
<FONT COLOR=#FFFFFF>Total </FONT></TD>
<TD ALIGN="right">
<INPUT NAME="Total" VALUE="0" MAXLENGTH="7" SIZE=7></TD>
<TD COLSPAN=2>
<INPUT TYPE="Button" NAME="CalcTotal" VALUE="Calculate"></TD>
</TR>
```

The bottom rows in your finished table should look like this:

Subtotal	<input type="text" value="0"/>	
Tax	<input type="text" value="0"/>	
Total	<input type="text" value="0"/>	<input type="button" value="Calculate"/>

#### ➤ Add spin buttons to the Products table

1. Add another column to the Products table for the spin buttons. This column doesn't have its own heading, so extend the Quantity heading an extra column with COLSPAN=2.
2. Retrieve the class ID for the SpinButton control.
  - a. Open the OLE Viewer or the ActiveX Control Insertion Device, or run RegEdit to open the Registry. For Installation and Setup Instructions for the OLE Viewer and the ActiveX Control Insertion Device, see Development Tools.
  - b. Search for SpinButton.

This control is installed with Visual Basic. If it isn't installed on your machine, the class ID is: B16553C0-06DB-101B-85B2-0000C009BE81
  - c. Either copy the <OBJECT> tag to the Clipboard, or write down the class ID.
3. Add the <OBJECT> tags to the Products table for the spin buttons:
  - a. Set the CLASSID parameter to the class ID of the spin button.
  - b. Set the ID parameter to Spin1, Spin2, and so on.
  - c. Set the width to 17 and the height to 20.
4. Set the CODEBASE parameter:
  - a. Make sure that the spin button control, Spin32.ocx, is in the Controls directory of the Main Street Market Web site. If it isn't, copy the file from the \Labs\Lab04 directory to the Controls directory of your Web site.
  - b. Set the CODEBASE parameter of the <OBJECT> tag to point to this file.

If you are unsure of the syntax for the <OBJECT> tag, look at this solution code:

```
<object
  ID="Spin1"
  classid="clsid:B16553C0-06DB-101B-85B2-0000C009BE81"
  CODEBASE="/Controls/spin32.ocx"
  WIDTH=17 HEIGHT=20>
</object>
```

5. Initialize the following properties with PARAM tags.

Property	Value
BorderThickness	0
ShadowThickness	1
TdThickness	1

6. Save your changes to the Products Web page.

➤ **Test the Products page.**

- ◆ Open the Products page with Internet Explorer.

Your finished table should look like this:

Number	Product Name	Category	Price	Quantity
60	Camembert Pierrot	Dairy Products	\$34.00	0
58	Escargots de Bourgogne	Seafood	\$13.25	0